



**MINI CULTIVATOR & DETHATCHER
INSTRUCTIONS
Y4007**



**THANK YOU FOR PURCHASING YOUR GARDEN TRAX GARDEN TOOL! IT IS
IMPORTANT THAT YOU READ ALL ASSEMBLY, USAGE AND SAFETY INSTRUCTIONS!
PLEASE TAKE TIME TO READ THIS MANUAL AND FOLLOW ALL INSTRUCTIONS TO
ENHANCE YOUR GARDENING EXPERIENCE! THEN PLEASE REGISTER YOUR
PURCHASE AT WWW.THUNDERBAYPRODUCTS.COM OR BY FILLING OUT AND
MAILING IN YOUR WARRANTY CARD.**



MODEL Y4007
MINI CULTIVATOR AND DETHATCHER

CONGRATULATIONS...

on purchasing your new **GARDEN TRAX MINI CULTIVATOR & DETHATCHER** and welcome to the world of Garden Trax Gardening. We know that you are anxious to get right to work and start working in your garden, but before you do, it is important that you take a few moments and familiarize yourself with your new unit and its assembly and operating instructions. Please read your owner's manual and take time to save time. We have worked hard to ensure that your new unit will be one of the most trouble-free and satisfying pieces of equipment you have ever owned. With proper care and maintenance, your new equipment will provide many years of service. Please take the time to read this manual carefully to learn how to correctly assemble, use and maintain your unit.

Unlike big tillers, the Garden Trax Mini Cultivator and Dethatcher weighs only 30.5 lbs. It lifts easily, handles smoothly and accurately weeds and tills. Unlike other small tillers, it features serpentine blades that churn the soil up to four inches deep to create a soft, smooth seed bed even in the most problematic soil. Once you know how to correctly use your new unit, we guarantee you will love it!

CONTENTS

Registration/Introduction/Specifications	3
General Safety Rules	4-7
Unpacking & Assembly	8
Operation	9-12
Maintenance	13-14
Spark Plug/Carburetor/Tine Installation & Removal	15
Wheel and Drag Stake Adjustment	16
Transportation and Storage	17
Troubleshooting	18
Handle Bar Parts	19
Hood & Tine Parts	20
Transmission Parts	21
Engine Parts	22-23
Border-Edger Kit Installation (Optional Accessory)	24
Lawn Aerator	25



MODEL Y4007

MINI CULTIVATOR AND DETHATCHER

REGISTRATION

RECORD YOUR MODEL INFORMATION IN THE SPACE BELOW FOR EASY REFERENCE AND BE SURE AND FILL OUT AND MAIL IN YOUR REGISTRATION CARD FOUND IN YOUR PARTS PACKAGE

MODEL NUMBER	
SERIAL NUMBER	
ENGINE SERIAL NUMBER	
DATE OF PURCHASE	
PLACE OF PURCHASE	

OWNER'S RESPONSIBILITY AND MODEL SPECIFICATIONS

CORRECT, ACCURATE ASSEMBLY AND SAFE USE OF THIS UNIT IS YOUR RESPONSIBILITY!!!!

- READ AND FOLLOW ALL SAFETY INSTRUCTIONS
- PAY CLOSE ATTENTION AND FULLY UNDERSTAND ALL SAFETY PRACTICES
- CAREFULLY FOLLOW ALL ASSEMBLY INSTRUCTIONS
- MAINTAIN THE UNIT ACCORDING TO DIRECTIONS AND SCHEDULE IN YOUR MANUAL
- ENSURE ANYONE WHO USES THIS UNIT IS FAMILIAR WITH ALL CONTROLS, PARTS AND SAFETY

SPECIFICATIONS

ENGINE DISPLACEMENT	37.7cc
FUEL TANK CAPACITY	17 oz
OIL TYPE	10w30
OIL CAPACITY	2.1 ozs
GAS TYPE	Unleaded Regular Gas
SPARK PLUG	CMR5H
SPARK PLUG GAP	0.028
TRANSMISSION	Gear Drive
GEAR RATIO	32:1
TILLING WIDTH	6" Min to 12" Max
TILLING DEPTH	4" Max
TINE SPEED	250 rpm
WHEEL SIZE	1.375 x 7.0" Diam
UNIT WEIGHT	30.5 lbs
UNIT SIZE (L x W x H) INCHES	23" x 20" x 20"
RATED POWER	1.0 kw
VIBRATION	(Left Handle: 3.34 m's2)(Right Handle 3.47 m's2) k-1.5 m's2
LpA AT OPERATOR'S POSITION	82.4 dB(A) Kpa - 2.5 dB(A)
LwA	93 dB(A)
KwA	2.5 dB(A)



MODEL Y4007
MINI CULTIVATOR AND DETHATCHER



IMPORTANT!

AVOID DAMAGE! THIS TEXT IS USED TO TELL THE OPERATOR OF ACTIONS OR CONDITIONS THAT MIGHT RESULT IN DAMAGE TO THE UNIT!



CAUTION!

AVOID INJURY! THIS SYMBOL AND TEXT HIGHLIGHT POTENTIAL HAZARDS OR SITUATIONS THAT COULD CAUSE DEATH TO THE OPERATOR OR BYSTANDERS THAT COULD OCCUR IF THE HAZARDS OR SAFETY PROCEDURES ARE IGNORED!

GENERAL SAFETY RULES

SPECIAL MESSAGES

This manual contains special messages to highlight and bring attention to potential safety concerns, machine damage as well as helpful operating and servicing information. Please read all the manual to avoid injury and machine damage.

***NOTE** During the course of this manual, both general and specific information is given that may help the operator in the use, service and maintenance of this unit

IMPORTANT SAFETY PRECAUTIONS

Please read and follow the following section with diligence and care. Always operate the unit according to all the safety instructions and recommendations outlined throughout this manual. Anyone who may use the unit must read and study the instructions so that they are familiar with the unit, its controls and safety features.



This symbol is designed to draw your attention to important safety instructions. If these are not followed, personal safety could be endangered! Read and follow all the safety instructions in this manual before ever attempting to operate this equipment!

- Do not carry or transport the unit from one place to another with the engine running
- When the engine is idling, the tines should not be turning. If they do rotate, contact customer service for support
- Dress appropriately when operating this unit. Never wear sandals, sneakers, open shoes or other light footwear. Always wear study boots. Never, ever operate this unit with bare feet! Always be conscious of loose fitting clothing that could get caught in moving parts. Always wear safety goggles or glasses when operating unit
- Always keep hands, hair, feet and any loose clothing away from moving parts of unit
- When operating always wear a protective hearing device
- Never allow children to operate this unit. Never allow adults who are not familiar with this unit and have not read the instructions to operate the unit
- Never operate this unit when under the influence of alcohol or drugs
- Make sure all nuts, bolts and screws are always tight. Use only original equipment parts
- Before making repairs or adjustments, turn off the unit and allow to cool down. Remove the spark plug wire also
- The muffler and nearby areas can exceed 150° F (65° C) in temperature. Avoid these areas and allow unit to cool
- This engine produces carbon monoxide (an odorless, deadly gas). Never run this unit indoors or in enclosed area
- Before using this unit, carefully inspect area to be tilled. Remove all foreign objects. Never use above underground utilities, including water, gas and electric lines or pipes
- Do not operate this unit in ground with large rocks or obstacles that could damage the unit
- If an object becomes lodged in unit, turn unit off and remove spark plug wire. Allow unit to cool before dislodging



WARNING

California Proposition 65 Warning states that exhaust from this unit contains chemicals known to the state of California to cause cancer, birth defects, or other reproductive harm



MODEL Y4007

MINI CULTIVATOR AND DETHATCHER

ENGINE SAFETY PRECAUTIONS

CARBON MONOXIDE POISING WARNING

All engines have carbon monoxide contained in their exhaust fumes. It is a deadly, colorless, odorless, tasteless gas which could be present even though you see or smell no engine exhaust. In an enclosed area with no ventilation, this gas can linger for days. If inhaled at any level, this gas can cause drowsiness, headaches, nausea, dizziness, confusion and even death. If you experience any of these symptoms, immediately seek fresh air and medical attention.

SAFETY GUIDELINES FOR PREVENTING POISING

- Never run the unit's engine indoors
- Carbon Monoxide can reach dangerous levels quickly, so never try and ventilate indoors
- Never use the unit, when exhaust fumes can be pulled into an indoor facility
- Never use the unit in a poorly ventilated outdoor area where exhaust fumes cannot be easily vented (examples include hilly terrain that enclose an area or a large hole)
- Never use the unit in an enclosed or partially enclosed area such as tents, carports, basements or structures with one or more side enclosures
- Always run the unit with the exhaust and muffler pointed away from the operator
- Make sure anyone with you is well away from the unit and never point the exhaust toward a person

GASOLINE FIRES AND FUEL SAFETY

Never use fuel in any place where a spark or flame might be present. Both fuel and its vapors are dangerous and highly flammable and could ignite. Never use fuel around clothes dryers, hot water or space heaters, electric motors, etc. Fuel fires spread quickly and are highly explosive. Keep flames and sparks away from engine and fuel.

PREVENTION OF GASOLINE FIRES

- Never fill your fuel tank indoors. Always fill it outside in a ventilated area
- Never fill with the engine running. Always allow unit to cool before filling unit
- Never drain fuel from the unit in enclosed area
- Always wipe any excess fuel from engine and area before starting unit
- Allow any spilled fuel to dry after wiping and before starting unit
- Always allow time for any vapors to vent before starting unit
- Always test to make sure fuel cap is secure before starting unit
- Never run the unit without the fuel cap securely installed
- Never smoke while using this unit
- To prevent fire or explosion by static discharge, use only non-metal, portable fuel containers approved by UL or the ASTM
- Never pour fuel from the units fuel tank
- An adult should always fill the fuel tank
- Never allow anyone under the influence of alcohol or drugs to fill the fuel tank or operate this device
- Never allow children to fill the fuel tank or operate this device
- During break-in period clutch slippage may occur. After about two hours of normal operation the clutch will transfer maximum power to the tines. Always keep clutch free of oil and other moisture

TOLL FREE HELP LINE 1 855 691 5969



MODEL Y4007
MINI CULTIVATOR AND DETHATCHER

BURNS AND FIRES

Certain parts of this unit such as the muffler, muffler guard and engine parts become extremely hot during the operation of this unit. These parts will remain extremely hot even after the unit has been turned off and stopped running

Prevention of Burns and Fires

- Never remove the muffler guard from the engine
- Never touch the muffler guard. It is extremely hot and will cause burns
- Never touch engine parts that have become hot during operation
- Always keep flammable debris away from muffler guard and other hot parts of the engine


The engine of this unit is designed to be operated using a catalytic converter which complies with EPA requirements.

Steps for Working on the Unit's Engine

- Turn off the unit's engine switch
- Disconnect the Spark Plug wire from the Spark Plug
- Always place the disconnected Spark Plug wire away from the Spark Plug to prevent arching from the Spark Plug and metal parts
- Now you may replace parts or repair the unit
- When complete check to make sure all parts that have been removed are tightly secured

NOTE: All repair parts for this unit must come from the factory or our authorized service center. Never replace parts that are not specifically designed for this unit and its engine.

1. Replace Spark Plug Wire

	CAUTION!
<p>HOT GASES ARE A NORMAL BY PRODUCT OF A PROPER FUNCTIONING CATALYTIC CONVERTER. PLEASE FOLLOW ALL SAFETY INSTRUCTIONS TO PREVENT BURNS AND FIRES!</p>	
<p>NEVER ALTER OR MODIFY THE UNIT'S ENGINE</p>	
<p>NEVER ALTER OR MODIFY THIS UNIT'S FACTORY ENGINE. IF YOU DO SO, SERIOUS INJURY OR DEATH COULD RESULT!</p>	
<p>WHEN WORKING ON UNIT OR REPLACING PARTS, YOU MUST ALWAYS DISCONNECT THE SPART PLUG WIRE FROM THE SPARK PLUG AND KEEP THE WIRE SEPERATED FROM THE PLUG</p>	

Need Help?
PLEASE CALL





MODEL Y4007 MINI CULTIVATOR AND DETHATCHER

SAFETY DECAL

Garden Trax is a leading manufacturer of outdoor power equipment. This unit had been designed and manufactured with your safety in mind. It has been manufactured with all the reliability you expect from an industry leader.

Please read this manual in order to gain the necessary knowledge to operate this unit safely and effectively. You will find a safety decal that has been placed on the unit itself to remind you to always use safety first when operating the unit.

The safety decal is shown below in order to familiarize you with its content. Please review the decal now and if you have any questions regarding its meaning, please reread these instructions or contact our service representative.

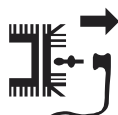
If the decal on the unit should become faded, worn or damaged in any way during the use of your unit, please refer to the part number and order a new decal from our authorized service center. The decals are easily applied and will act as a constant visual reminder to and others to always follow safety instructions for the safe and satisfying operation of this unit.



READ THIS INSTRUCTION MANUEL CAREFULLY AND THOROUGHLY ! KEEP IT IN A SAFE PLACE FOR FUTURE REFERENCE.



WARNING! THIS UNIT USES BOTH GASOLINE AND OIL... ALWAYS TAKE EXTRA PRECAUTIONS WHEN OPERATING OR MOVING THIS UNIT.



WARNING! ALWAYS TURN OFF THIS UNIT AND DISCONNECT THE SPARK PLUG WIRE BEFORE CLEANING, TRANSPORTING OR MAKING ANY ADJUSTMENTS. NEVER LEAVE UNIT RUNNING UNATTENDED.



WARNING! NEVER PLACE FEET OR HANDS UNDER THE TILLER DECK WHILE THIS UNIT IS IN OPERATION.KEEP LOOSE CLOTHING AWAY FROM MOVING PARTS.



WARNING! ALWAYS CLEAN THE AREA THAT YOU INTEND TO CULTIVATE. THERE IS A RISK THAT STONES OR OTHER OBJECTS COULD BE THROWN OUT BY THE TILLER. ALWAYS KEEP BYSTANDERS AND PETS AT A SAFE DISTANCE.



MODEL Y4007 MINI CULTIVATOR AND DETHATCHER

UNPACKING & ASSEMBLY

Unpack your unit by carefully lifting it out of its container. Remove any packing material and cut any plastic ties holding the handlebar pieces to the rest of the assembly

ASSEMBLY

1. Stand the mini cultivator assembly upright with tines and wheels on a level surface. Wheels should be set in the lowest position. **DO NOT** place the mini cultivator on a high surface where it can fall and cause property damage or personal injury
2. Using two tee handle nuts, two bolts and two curved washers, assemble the middle handlebar to the lower handlebar that is already attached to the mini cultivator assembly. **(SEE FIGURE 1)** The middle handlebar can be installed in two positions one high and one low. **DO NOT OVER TIGHTEN THE TEE HANDLE NUTS**
3. Attach the upper right and left handlebars to the middle handlebar using the two remaining tee handle nuts, bolts, and curved washers. **(SEE FIGURE 1)** **DO NOT OVER TIGHTEN THE TEE HANDLE NUTS**

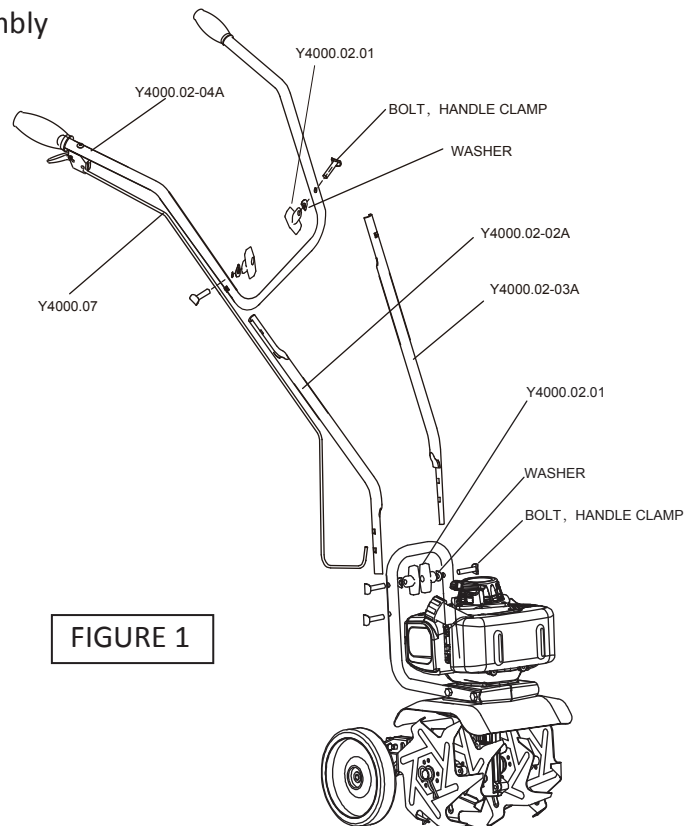


FIGURE 1

Need Help? PLEASE CALL





MODEL Y4007 MINI CULTIVATOR AND DETHATCHER

OPERATION OF UNIT

STEPS FOR WORKING ON ENGINE OR UNIT

- Turn off engine switch
- Disconnect the spark plug wire from spark plug
- Securely place the disconnected spark plug wire safely away from the spark plug and any metal parts. This must always be done or arcing may occur between the spark plug wire and other metal parts
- Repair or replace the part on the engine or unit
- Check all parts that were repaired or removed during repair to ensure that they are secure and fit correctly
- Replace spark plug wire

PREPARING ENGINE FOR STARTING

GAS AND OIL

- We recommend using non-ethanol gasoline when ever possible. And NEVER use gasoline with an ethanol content higher than E10, 10% ethanol.
- Fresh fuel will help to insure a longer service life for your machine. Please use fresh fuel, purchased within 30 days of the date of use.
- The unit's engine is shipped **WITHOUT OIL**

OIL RECOMMENDATIONS

- Oil is a major factor affecting performance and service life. Use a quality automotive detergent oil
- Non-detergent oil can shorten the engine's service life and 2-stroke oil can damage the engine
- SAE 10W-30 is recommended for general use. See Chart A showing its recommended temperature range
- With the auger resting on a level surface with the engine stopped, tip the auger on its carry handle and remove oil filler cap/dipstick and fill with 10W-30 oil (See Figure 3)
- Check the engine's oil level before each use or every 10 hours if operated continuously
- When checking oil level, again tip auger on its carry handle and remove oil filler cap/dipstick. Wipe dipstick clean and reinsert dipstick without screwing in to check level. If the level is low fill to the edge of oil filler hole. Be sure unit is on a level position as shown (See Figures 3 and 4). Screw cap in securely

CHART A

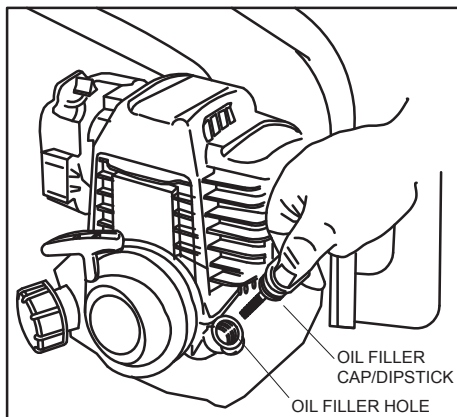
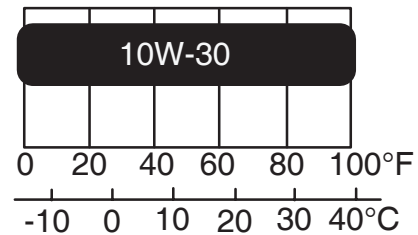


FIGURE3

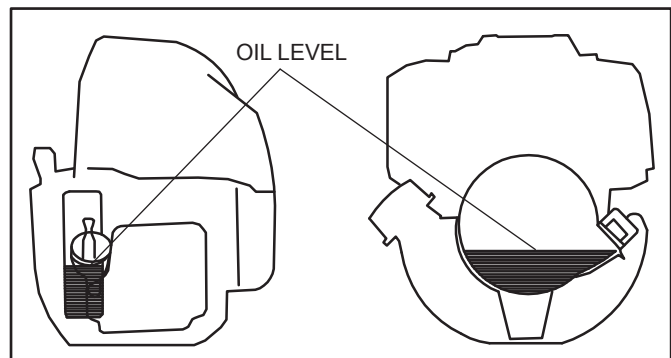


FIGURE4



MODEL Y4007

MINI CULTIVATOR AND DETHATCHER

OIL CHANGE

After each 10 hours of use, please check the oil in the crankcase and add as needed;

Drain the used oil while the engine is warm. Warm oil drains quickly and completely

1. Place a suitable container below the engine to catch the used oil
2. Remove the oil filler cap/dipstick
3. Tip the tiller to drain the used oil through the oil filler opening. Allow the used oil to drain completely

Note: Please dispose of used motor oil in a manner that is compatible with the environment. We suggest you take used oil in a sealed container to your local recycling center or service station for reclamation. Do not throw it in the trash, pour it on the ground, or pour it down a drain

4. With the engine resting on the carrying handle bar on a level surface, fill with the recommended oil to the edge of the oil filler hole.... DO NOT OVERFILL (See Figure 1 and 2)
5. Screw on the filler cap/dipstick securely

FILLING FUEL TANK

No Smoking!

1. Shut-off engine and allow engine to completely cool before refilling the fuel tank
2. Move to a well ventilated area, outdoors, away from flames and sparks
3. Clean debris from area around the fuel cap
4. Loosen fuel cap slowly. Place the cap on a clean, dry surface
5. Carefully add fuel without spilling
6. Do not fill gas tank completely full, allow space for fuel to expand
7. Immediately replace fuel cap and tighten. Wipe off spilled fuel and allow to dry before starting engine



CAUTION

NEVER ALTER/MODIFY ENGINE OR UNIT IN ANY WAY FROM HOW IT ARRIVED FROM THE FACTORY. SERIOUS INJURY OR DEATH CAN OCCUR! ALWAYS DISCONNECT SPARK PLUG WIRE FROM SPARK PLUG WHEN WORKING, CLEANING OR REPLACING PARTS FOR THE ENGINE OR AUGER AND KEEP IT AWAY FROM SPARK PLUG. WHEN OPERATING UNIT ALWAYS WEAR HEARING PROTECTION



CAUTION

PLEASE DO NOT START YOUR UNIT UNTIL YOU HAVE READ THE PREVIOUS SECTION OF THIS MANUAL. IF YOU HAVE, THEN PROCEED AND FOLLOW THE FOLLOWING STEPS TO START YOUR UNIT
USE ONLY NON-METAL PORTABLE FUEL CONTAINERS APPROVED BY UL OR BY ASTM. AN ADULT MUST ALWAYS HANDLE THE AUGER AND FUEL IT! ALWAYS HANDLE FUEL OUTDOORS IN A WELL VENTILATED AREA!



CAUTION

NEVER STORE ENGINE WITH FUEL IN THE TANK INDOORS. FUEL AND FUEL VAPORS ARE HIGHLY FLAMMABLE.

AN ADULT MUST ALWAYS HANDLE AND FILL THE TANK WITH FUEL. ALWAYS HANDLE GAS IN A WELL VENTILATED AREA OUTDOORS AWAY FROM OPEN FLAMES AND SPARKS.

DO NOT START ENGINE IF FUEL IS SPILLED. WIPE OFF EXCESS FUEL AND ALLOW TO DRY. REMOVE AUGER FROM AREA TO AVOID SPARKS



MODEL Y4007

MINI CULTIVATOR AND DETHATCHER



IMPORTANT!

FUEL AND FUEL VAPORS ARE HAZARDOUS AND HIGHLY FLAMMABLE. NEVER STORE UNIT INDOORS WITH THE FUEL STILL IN TANK FOR SAFETY REASONS!

ALWAYS USE A CERTIFIED GAS CONTAINER APPROVED BY UNDERWRITERS LABORATORY (UL) OR THE AMERICAN SOCIETY FOR TESTING AND MATERIALS (ASTM)

WHEN FILLING THE UNIT WITH FUEL, IT SHOULD ALWAYS BE DONE BY AN ADULT

ALWAYS HANDLE FUEL OUTSIDE IN A WELL VENTILATED AREA AWAY FROM FLAME OR SPARKS

DO NOT START ENGINE IF THERE IS FUEL SPILLAGE. ALWAYS CLEAN SPILLAGE FROM UNIT. WIPE CLEAN AND ALLOW TO DRY BEFORE STARTING UNIT

NORMAL OPERATION

1. The clutch transfer maximum power to the unit tines after approximately 2 hours of normal operation. During this break-in period clutch slippage may occur. The unit's clutch should be kept free of oil and other moisture to ensure efficient operation
2. When cultivating, do not place excessive body weight on the unit. The unit will operate most efficiently with the use of its own weight
3. Exhaust fumes can be deadly. Never run unit indoors or in an unventilated area

STARTING AND STOPPING THE ENGINE

1. To prevent carbon monoxide poisoning, always start unit outdoors in a well ventilated area
2. Always be aware of gas vapors. Before starting, make sure is well ventilated area
3. Make sure all air filter holes as well as fuel tank area are free of all debris

COLD ENGINE STARTING

Starting the engine for the first time or after running out of fuel or if engine has cooled off

1. Move choke lever to the RUN position
NOTE: Choke must be in the RUN position when engaging the primer bulb
2. Use the primer bulb to prime unit until primer hose is full of gas mixture
NOTE: When using primer bulb, allow the primer bulb to completely return to its original position after each pump
3. Move choke lever to choke position
NOTE: In the choke position, always move the lever to the Farthest choke position possible
4. Push rocker switch to the ON position
5. Squeeze the throttle control with the right hand. Grasp the starter rope handle and pull out slowly until the tension becomes slightly harder. Without letting the rope retract, pull the starter rope with a rapid, forearm stroke. Allow rope to return to its original position. Repeat step until unit engages and allow rope to return to original position each time it is engaged
NOTE: If the engine fails to engage after trying for 5 to 6 pulls, press the primer bulb 1 time and repeat process
6. Once the engine is engaged and has started running, move the choke lever to the half-choke position until engine runs smoothly
NOTE: Half-Choke position is defined as being half-way between Choke and Run
7. Once unit is running smoothly, move lever to the RUN position and engage throttle to the desired speed
NOTE: Do not let the unit idle for extended periods. Always run at FULL throttle speed when possible
8. In order to stop unit, move rocker switch to the OFF position



WARM ENGINE STARTING

1. Move the Choke Lever to the Choke position

NOTE: Choke position is defined as moving the lever to the farthest Choke position possible

2. Continue by repeating Cold Engine Starting beginning with Step 4

HOT ENGINE STARTING

1. Begin with Step 4 of Cold Engine Starting
2. If engine does not start, refer to Step 1 of Warm Engine Starting

DO NOT attempt to start engine in the following ways:

- **DO NOT** use starting fluid
- **DO NOT** spray flammable liquids or vapors into air cleaner, carburetor or spark plug chamber
- **DO NOT** remove Spark Plug and attempt to start engine. Flammable fuel can spray out & ignite from a spark from spark plug



WARNING!

ALWAYS MAKE SURE THE UNIT IS IN A STABLE POSITION BEFORE PULLING THE STARTER HANDLE

ONCE THE UNIT STARTS TO ENGAGE, MOMENTARILY RELEASE THE THROTTLE CONTROL WITH YOUR RIGHT HAND. MOVE BOTH HANDS TO THE HANDLEBAR POSITION AND USE TO MAINTAIN CONTROL AND STABILITY OF THE UNIT



CAUTION!

WHEN STARTING THE UNIT, THE STARTER ROPE CAN SOMETIMES CAUSE AN UNANTICIPATED JERT BACK TOWARDS THE ENGINE. FOLLOW THE INSTRUCTIONS TO HELP AVOID ANY INJURIES

ALWAYS TURN OFF THE ENGINE AFTER EVERY USE. NEVER LEAVE A RUNNING UNIT UNATTENDED AT ANY TIME

NEVER CARRY THE UNIT FROM ONE LOCATION TO ANOTHER WHILE THE UNIT IS RUNNING

ALWAYS HANDLE THE FUELING OF THE UNIT IN A WELL VENTILATED AREA FREE FROM OPEN FLAME AND SPARKS

WHILE OPERATING THIS UNIT ALWAYS WEAR A PROTECTIVE HEARING DEVICE

DO NOT ATTEMPT TO START UNIT IF THERE IS FUEL SPILLAGE PRESENT. ALWAYS CLEAN UNIT

**Need Help?
PLEASE CALL**



During the assembly process or while operating or maintaining your auger, if you have any questions, please call our Authorized Service Center at the toll free number listed



MODEL Y4007

MINI CULTIVATOR AND DETHATCHER

MAINTENANCE

STEPS FOR WORKING ON EQUIPMENT

1. Make sure engine switch is in the off position
2. Disconnect the Spark Plug wire from the Spark Plug
3. Secure the Spark Plug wire away from the Spark Plug itself and other metal parts. Make sure this is done to prevent wire from arching with Plug
4. Replace or repair parts on your unit
5. Once complete, make sure all parts are secure and fit correctly

NOTE: All parts must come from the factory or our authorized Service Center. Never use parts that are not designed specifically for the unit

6. Once complete, reattach the Spark Plug wire

MINI CULTIVATOR MAINTENANCE

1. The unit Transmission Case comes with grease that has been packed at the factory. It is recommended by the factory that the grease level be checked by a qualified service professional to ensure that the grease level is accurate. If grease is needed, add only molythium type grease only if the level is below the top of the gears. DO NOT OVERFILL!
2. Make sure all screws, nuts and bolts are secure and tight
3. Store the unit in a safe cool environment for cold weather operation. Transferring the unit from cold to warm environments can cause condensation build up

ENGINE MAINTENANCE

1. Cooling Fins, Air Vents and linkages must always be kept free of dirt and debris. Always make sure they are clean before each time you use the unit
2. Never Run this unit without the engine Air Filter properly installed. Engine failure and additional wear may occur if air cleaner is not installed properly
3. Service the Air Filter every 90 days or after 20 or more hours of operation. Clean Air filter on a daily basis in dry, dusty, or other extreme conditions. If dust is visible in the air while the machine is in operation, the air filter should be cleaned.



CAUTION!

PRACTICE SAFETY AT ALL TIMES!!!! ENGINE MUST BE TURNED OFF AND ALLOWED TO COOL AND SPARK PLUG WIRE MUST BE DISCONNECTED WHENEVER WORKING ON UNIT FOR MAINTENANCE OR REPAIR

TO PREVENT ACCIDENTAL STARTING:

ENGINE MUST BE TURNED OFF AND ALLOWED TO COOL AND SPARK PLUG WIRE MUST BE DISCONNECTED BEFORE CHECKING OR ADJUSTING ENGINE

MUFFLER AND NEARBY AREA TEMPERATURES MAY EXCEED 150° F (65° C). AVOID THESE AREAS

ALWAYS CHECK UNIT FOR LOOSE SCREWS AND BOLTS. KEEP CONNECTIONS SECURE

NEVER STORE UNIT INDOORS WITH FUEL IN THE TANK. FUEL VAPORS MAY BE PRESENT

ONLY ADULTS SHOULD BE ALLOWED TO USE UNIT OR PERFORM MAINTENANCE ON IT

ENGINE MUST BE TURNED OFF AND SPARK PLUG WIRE DISCONNECTED BEFORE ANY REPAIRS OR MAINTENANCE IS PERFORMED ON UNIT



MODEL Y4007
MINI CULTIVATOR AND DETHATCHER

KEEPING THE AIR FILTER CLEAN

Never run engine without air cleaner properly installed. Added wear and engine failure may occur if air cleaner is not installed on engine

Service air cleaner every 3 months or after 20 hours of operation

Clean filter daily in extremely dusty conditions

STEPS FOR CLEANING RING STYLE FOAM AIR FILTER

1. Wash in warm water with liquid detergent until dirt and debris are removed. Press or squeeze filter when cleaning...
DO NOT TWIST
2. Rinse filter until detergent and dirt are removed
3. Dry filter by wrapping in dry cloth and pressing until water is removed
4. Apply lightweight motor oil or thin based machine oil to entire filter
5. Remove excess oil
6. Reattach filter and cover to unit

STEPS FOR CLEANING BLOCK STYLE FOAM AIR FILTER

1. Before removing the air filter cover, move the choke lever to the choke position (See Figure 5)
2. To remove air filter cover, squeeze the latch tabs on both sides of the cover (See Figure 6)
3. Once the latch tabs are released, remove air filter cover by rotating the cover away from the engine (See Figure 7)
4. Remove the white plastic cover and the foam filter element (See Figure 8) and replace with a new oiled filter, or clean the original foam filter with warm water and mild soap by following the previous steps for Cleaning Air Filter. Remember to thoroughly oil the foam filter with 30 or 40 weight motor oil and squeeze out excess oil
5. Reinstall the foam filter and white plastic cover, pressing it in place to ensure that the foam is fully seated into its sealed position (See Figure 9)
6. Replace the air filter cover so that it fully snaps into place and is secured by the latch tabs. Check that the cover is securely attached by pulling slightly on the cover. If the cover does not move when pulled, then it is secure



FIGURE 5



FIGURE 6



FIGURE 7



FIGURE 8



FIGURE 9



MODEL Y4007

MINI CULTIVATOR AND DETHATCHER

SPARK PLUG

THE RECOMMENDED SPARK PLUG FOR THIS UNIT IS A5RTC

NGK Equivalent plug number CR5HSA

1. Always check the Spark Plug at the beginning of each season
2. Disconnect Spark Plug Cap and clean any debris or dirt from around the Spark Plug area
3. Exam the Spark Plug and replace if any of the following have occurred:
 - a. Pitted Electrodes
 - b. Burned Electrodes
 - c. Cracked Porcelain
 - d. Or Deposits around Spark Plug
4. After cleaning or replacing, reseal Spark Plug and tighten securely.... reattach Spark Plug wire
5. When reinstalling original Spark Plug, tighten an additional 1/2 turn
6. When replacing Spark Plug, adjust Spark Plug Gap to .028" and tighten an additional 1/8 to 1/4 turn

NOTE: A loose Spark Plug can overheat and damage your engine. Over tightening too much could damage the threads in the cylinder head

CARBURETOR

NEVER TAMPER WITH THE FACTORY SETTING OF THE CARBURETOR

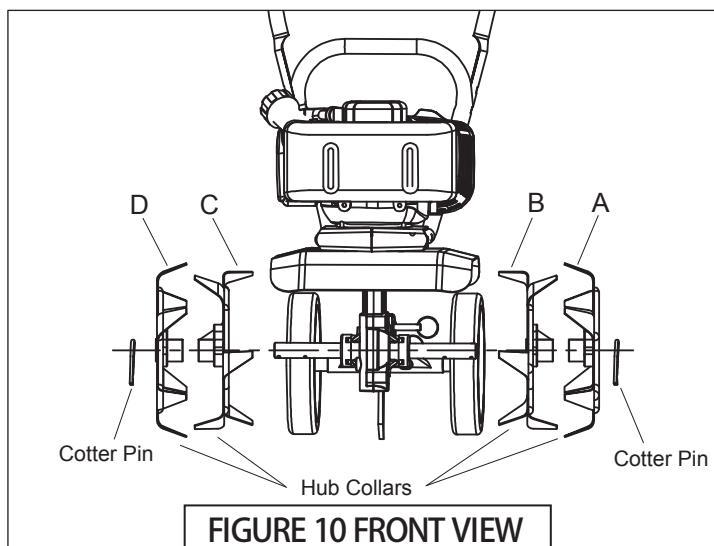
TINE REMOVAL AND INSTALLATION

REMOVING TINES

1. Remove the cotter pins from each end of the tine shaft
2. Slide each of the four tines off the shaft

INSTALLING TINES

1. First slide the inside tines onto both ends of the tine shaft. Inside tines are stamped with either a letter "B" or "C"
2. Slide the outside tines onto the tine shaft. The outside tines are stamped with either the letter "A" or "D"
3. The tines should be installed so that they are aligned in a sequence of "A,B.C.D" and should be positioned in that order from left to right when viewed from the user's position of the mini cultivator
4. Make sure the hub collars on both the right and left pair of tines face each other so that there is adequate spacing between the tine blades (SEE FIGURE 10)
5. Reinsert the cotter pins back on each side of the tine shaft to lock the tines into place





MODEL Y4007

MINI CULTIVATOR AND DETHATCHER

ADJUSTING WHEELS

The wheels on the mini cultivator can be adjusted into two height positions (SEE FIGURE 11)

1. To adjust the wheels, pull the detent pin out of the rear mounted plastic parts mount hole
2. Turn the rear mounted plastic parts 180 degrees and then put the rear mounted plastic parts into the rear hanging board and then replace the detent pin

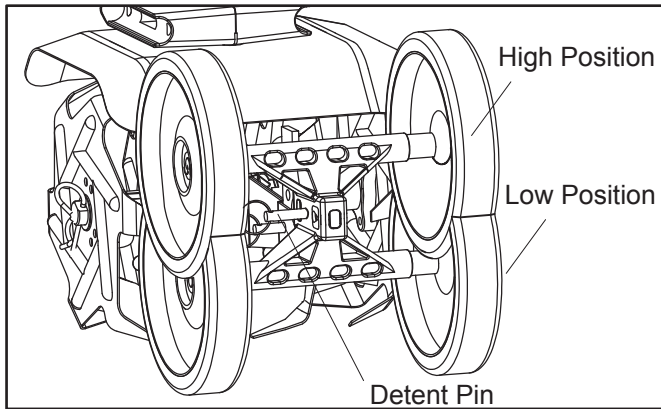


FIGURE11

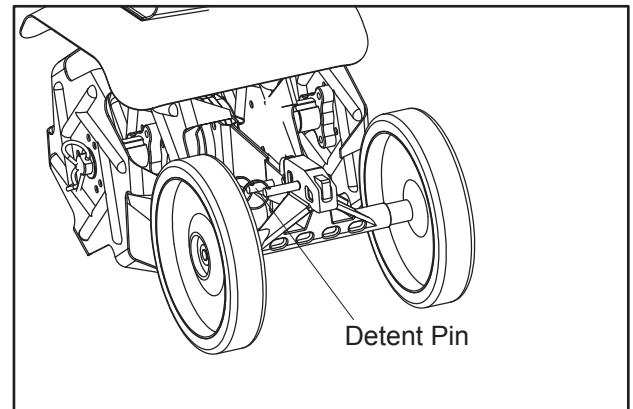


FIGURE12

ADJUSTING THE DRAG STAKE

The Drag Stake is used to regulate the depth of cultivation and also to help maintain direction and keep the mini cultivator from leaping forward during operation. Resistance to the forward motion is achieved when the Drag Stake is set to its lowest position allowing deeper cultivation (SEE FIGURE 12)

1. Pull the pin out of the Drag Stake mount hole
2. Position the Drag Stake so that the pointed end of the stake is directed downward
3. Once desired depth is reached, reinsert the Drag Stake pin back into the hole



WARNING

Always make sure engine is off whenever maintenance or cleaning is being done on the unit. Make sure unit is off when using tools and moving the unit from one location to the other by any means other than its own power
Never work on excessively steep slopes and always wear quality safety shoes when operating this device
Always inspect the area to be cultivated and make sure it is free of any objects that could be thrown by the unit
This device should only be operated by suitably trained adult individuals who have read the entire instructions



MODEL Y4007
MINI CULTIVATOR AND DETHATCHER

TRANSPORTING YOUR UNIT

1. After using your mini cultivator, always allow the unit to cool off before transporting. Never transport the unit in an enclosed space within a vehicle as fumes and vapors may build up. They could ignite and cause serious injury or death
2. If fuel is present in fuel tank, always transport in an open vehicle in an upright position
3. If an enclosed vehicle must be used, be sure that the fuel tank is empty and any unused gas mixture is secured in a UL or ASTM approved container
4. Never siphon out gas mixture by mouth
5. Run engine in order to use up any small amount of remaining fuel in carburetor and fuel tank
6. Always run engine in a well ventilated area
7. Clean up any spillage around fuel tank and allow to dry
8. Make sure the unit's gas cap is secured tightly before transport

LONG TERM STORAGE

1. If you will not be using your mini cultivator for more than 30 days, you need to prepare it for long term storage
2. Make sure all fuel is removed from gas tank. Run engine to ensure any remaining fuel in carburetor and tank are used
3. Store unit in a stable, upright and level position
4. Before storing, wash down unit to remove all dirt and debris from the body of the unit



CAUTION!

**TO AVOID SICKNESS OR EVEN DEATH,
NEVER SIPHON FUEL BY MOUTH**

**NEVER STORE MINI CULTIVATOR WITH
FUEL STILL IN THE TANK IN AN
ENCLOSED, UNVENTILATED AREA**

PRACTICE SAFETY AT ALL TIMES

**ALWAYS TURN OFF ENGINE AND
ALLOW UNIT TO COOL**

**ALWAYS DISCONNECT SPARK PLUG
WIRE BEFORE ATTEMPTING REPAIR OR
MAINTENANCE ON UNIT**

**Need Help?
PLEASE CALL**





MODEL Y4007
MINI CULTIVATOR AND DETHATCHER

TROUBLE SHOOTING

Here at Garden Trax, we strive to build the most durable and best quality designed products. However, all the hard work and best designs and all the careful maintenance on your part will never assure you that there will never be a problem. Even the small repair can be annoying. So we have prepared a troubleshooting guide to help you through most of these easily fixed repairs. The following guide will help you pinpoint the causes of common problems and identify remedies.

For more complicated repairs or any questions you might have concerning your Garden Trax unit, please feel free to contact your place of purchase or The Garden Trax warranty and authorized service center. We will always be glad to answer any questions you have, or help you find suitable assistance. To order parts or inquire about warranty, call, write or email us at the address found below, under the section ordering repair parts.

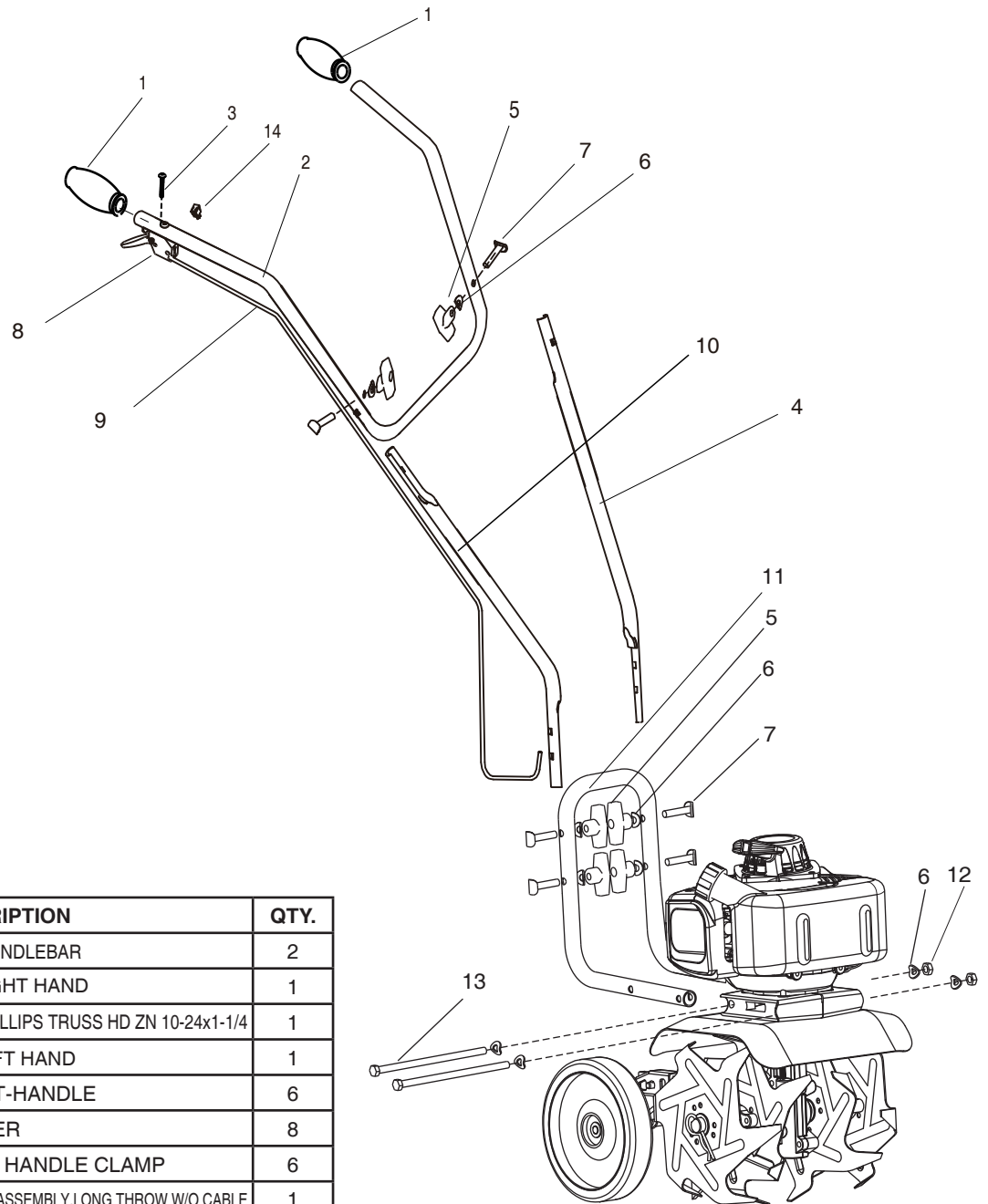
PROBLEM	POSSIBLE CAUSE	REMEDY/ACTION
Engine will not start	1. Power switch off	1. Flip switch to ON position
	2. Spark plug wire disconnected	2. Connect spark plug wire to spark plug
	3. Out of fuel	3. Refuel
	4. Spark plug wet, faulty or improperly gapped	4. Clean, replace or gap spark plug
	5. Throttle control not held open	5. Hold throttle control open when pulling recoil handle
	6. Fuel line hose not positioned in bottom of gas tank	6. Push fuel line down into fuel in gas tank
Engine runs rough, floods during operation	1. Dirty air filter	1. Clean or replace air filter
	2. Choke partially engaged	2. Turn off choke
	3. Carburetor out of adjustment	3. Call factory
Engine is hard to start	1. Stale fuel	1. Drain old fuel and replace with fresh.
	2. Spark plug wire loose	2. Make sure spark wire is securely attached to spark plug
	3. Dirty carburetor	3. Clean carburetor, use gas stabilizer, Refuel with fresh gasoline."
	4. Throttle control not held open	4. Prime unit 3 more times, then hold throttle open when pulling recoil handle
Engine misses or lacks power	1. Clogged gas tank	1. Remove and clean gas tank
	2. Clogged air filter	2. Clean or replace air filter
	3. Carburetor out of adjustment or bad	3. Call factory
	4. Spark plug wet, faulty or improperly gapped	4. Clean, replace or gap spark plug
Engine runs, then quits	1. Gas cap not venting	1. Clean or replace gas cap, check vent
	2. Plugged fuel filter	2. Clean or replace fuel filter
	3. Carburetor out of adjustment or bad	3. Call factory
Engine revs too high	1. Carburetor out of adjustment	1. Call factory
Tines turn at idle	1. Idle speed too high	1. Adjust idle speed lower
	2. Broken clutch spring	2. Replace spring



MODEL Y4007

MINI CULTIVATOR AND DETHATCHER

Y4007 HANDLEBAR STRUCTURE PARTS DRAWING & PARTS LIST

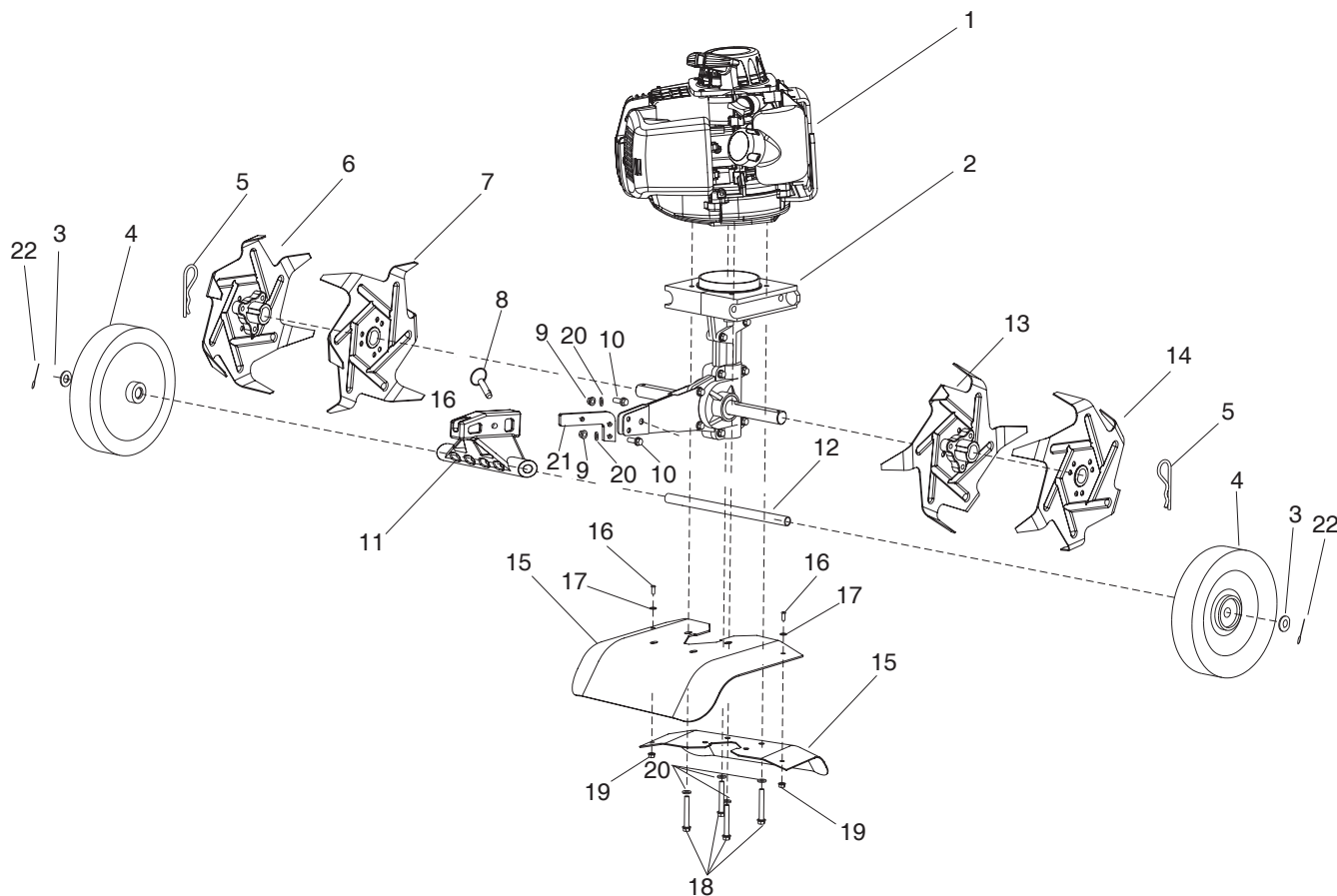


KEY	PART #	DESCRIPTION	QTY.
1	Y4000.02-05	GRIP,HANDLEBAR	2
2	Y4000.02-04A	HIS RIGHT HAND	1
3		BOLT,PHILLIPS TRUSS HD ZN 10-24x1-1/4	1
4	Y4000.02-03A	HIS LEFT HAND	1
5	Y4000.02.01	NUT, T-HANDLE	6
6		WASHER	8
7		BOLT, HANDLE CLAMP	6
8	Y43.03A	TRIGGER ASSEMBLY, LONG THROW W/O CABLE	1
9	Y4000.07	THROTTLE CABLE	1
10	Y4000.02-02A	HANDLEBAR, MIDDLE	1
11	Y4000.02-01	HANDLEBAR, LOWER	1
12	GB6187	NUT, HEX HD M8	2
13	GB5787	BOLT HEX HD M8X155	2
14		SWITCH, ROCKER	1



MODEL Y4007
MINI CULTIVATOR AND DETHATCHER

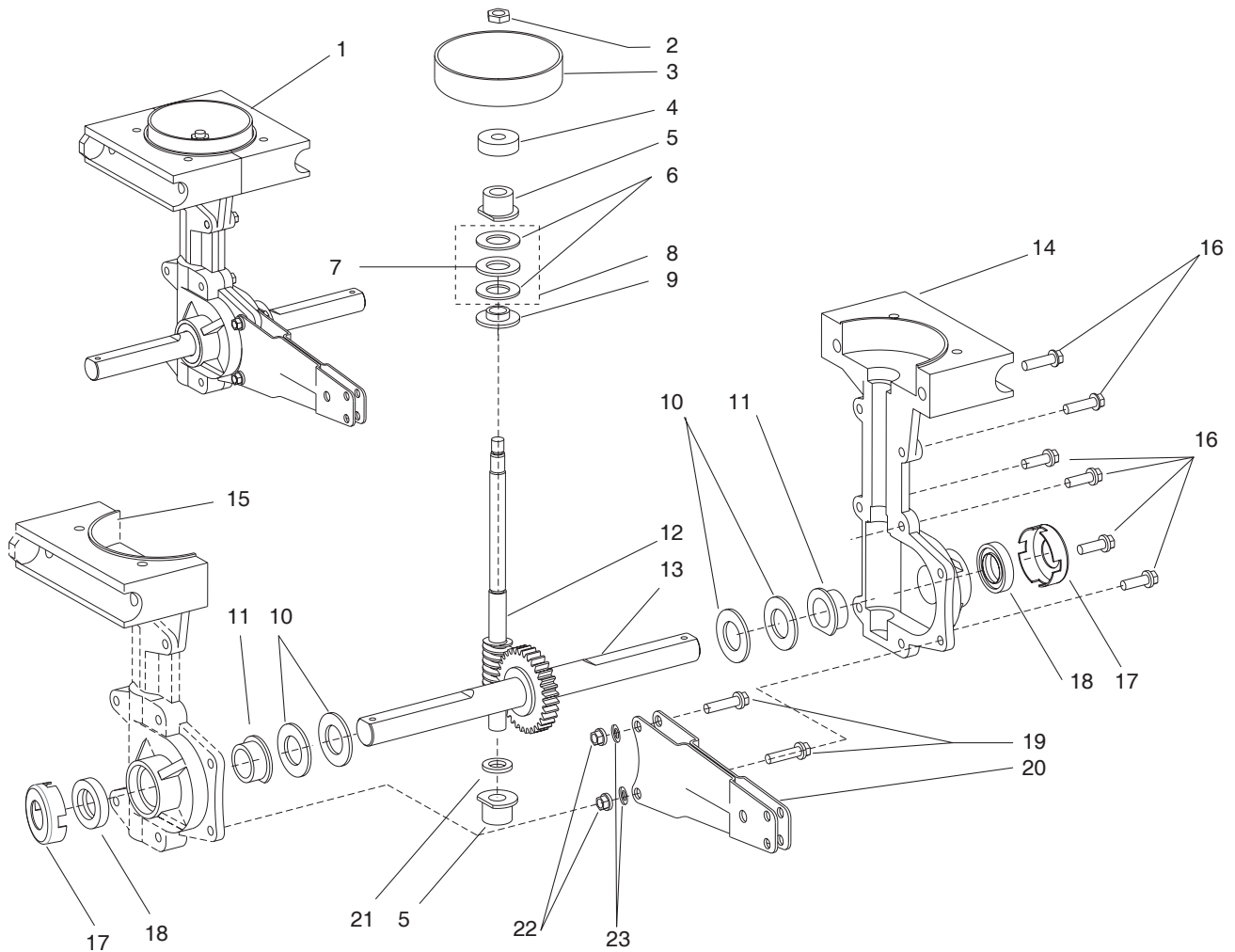
HOOD AND TINES PARTS LIST AND DRAWING



KEY	PART #	DESCRIPTION	QTY.
1	Y4000.01	140FA ENGINE	1
2	Y4000.03	TRANSMISSION ASSEMBLY	1
3	GB 97.1	WASHER 10	2
4	Y4000.05-05	WHEEL	2
5	Y4000.04-01	HAIR PIN, 5/8-3/4 COTTER	2
6	Y4000.04.04	TINE "A" RIGHT OUTSIDE	1
7	Y4000.04.03	TINE "B" RIGHT INSIDE	1
8	Y4000.05.02	DETENT PIN 5/16 X 1-1/2"	1
9	GB/T889.1	NUT M6 FLANGED HEX HD	2
10	GB5787	BOLT M6 X 20mm FLANGED HEX HD	2
11	Y4000.05-02	REAR MOUNTED PLASTIC PARTS	1
12	Y4000.05-03	REAR AXLE	1
13	Y4000.04.02	TINE "C" LEFT INSIDE	1
14	Y4000.04.01	TINE "D" LEFT OUTSIDE	1

KEY	PART #	DESCRIPTION	QTY.
15	Y4000.06-01	TINE SHIELD	2
16	GB5787	BOLT M5 X 10mm FLANGED HEX HD	2
17	GB97.1	WASHER 5	2
18	GB5787	BOLT M6 X 45mm FLANGED HEX HD	4
19	GB/T889.1	NUT M5	2
20	GB97.1	WASHER 6	6
21	Y4000.05-06	REAR HANGING BOARD	1
22	GB 91	PIN 2.5X30mm	2

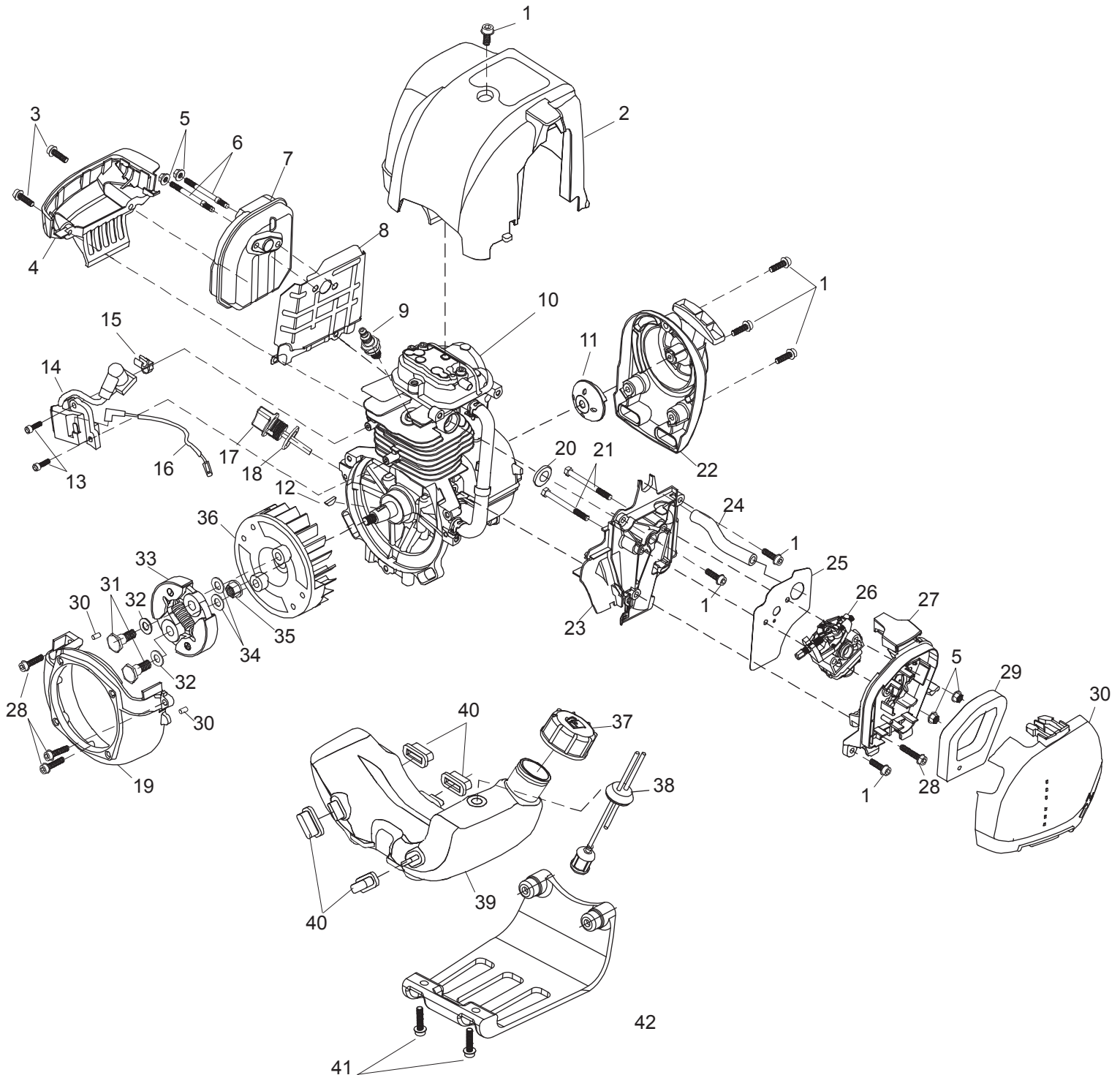
TRANSMISSION PARTS DRAWING AND PARTS LIST



KEY	PART #	DESCRIPTION	QTY.
1	Y4000.03	TRANSMISSION ASSEMBLY	1
2	GB/T6174	NUT, JAM M8	1
3	Y4000.03.01	CLUTCH DRUM	1
4		BALL BEARING, 629	1
5	Y4000.03-04	BUSHIN, GDRIVE SHAFT	2
6		WASHER, THRUST	2
7		THRUST BEARING CAGE WASHER	1
8		THRUST BEARING ASSEMBLY	1
9	Y4000.03-05	REDUCER, THRUST BEARING	1
10	Y4000.03-08	SHIM, TINE SHAFT	4
11	Y4000.03-09	BUSHING, TINE SHAFT	2
12	Y4000.03-03	WORM SPUD	1
13	Y4000.03.02	TINE GEAR & SHAFT ASSEMBLY	1

KEY	PART #	DESCRIPTION	QTY.
14	Y4000.03-02	TRANSMISSION CASTING, RIGHT	1
15	Y4000.03-01	TRANSMISSION CASTING, LEFT	1
16	GB5787	BOLT, FLG HEX HD M6X18	6
17	Y4000.03-06	DUST COVER	2
18		SEAL, TINE SHAFT	2
19	GB5787	BOLT, FLG HEX HD M6X25	2
20	Y4000.05.01	ARM WHEEL/DAG STAKE MOUNT	1
21	Y4000.03-07	SPACER, BUSHING	1
22	GB/T 889.1	NUT, FLANGED HEX HD M6	2
23	GB97.1	WASHER	2

ENGINE PARTS DRAWING





MODEL Y4007
MINI CULTIVATOR AND DETHATCHER

ENGINE PARTS LIST

KEY	PART #	DESCRIPTION	QTY.
1	140FA001	Screw M5X15	7
2	140FA002	Cylinder Cover	1
3	140FA003	Screw M5X12	4
4	140FA004	Muffler Baffle-II	1
5	140FA005	NUT M5	4
6	140FA006	Double-Edged Bolt	2
7	140FA007	Muffler	1
8	140FA008	Muffler Baffle	1
9	140FA009	Spark Plug	1
10	140FA010	Engine Body	1
11	140FA011	Start Reel	1
12	140FA012	Key 3X5X13	1
13	140FA013	Screw M4x14	2
14	140FA014	Ignition Coil	1
15	140FA015	Fastener	1
16	140FA016	Stopping wire	1
17	140FA017	Oil Scale	1
18	140FA018	O-seal Ring 14X2.65	1
19	140FA019	Fly Wheel Cover	1
20	140FA020	O-seal Ring	1
21	140FA021	Screw M5x55	2
22	140FA022	Starter	1
23	140FA023	Admitting Pipe	1
24	140FA024	Blast Pipe	1
25	140FA025	Gasket	1
26	140FA026	Carburetor	1
27	140FA027	Cleaner Inside Cover	1
28	140FA028	Screw M5x22	4
29	140FA029	Filter Net	1
30	140FA030	Outside Cover	1
31	140FA031	Screw Pin	2
32	140FA032	Washer	2
33	140FA033	Expander	1
34	140FA034	Washer	2
35	140FA035	Nut	1
36	140FA036	Flywheel, Magneto	1
37	140FA037	Fuel Tank Lid	1
38	140FA038	Cleaner and Fuel Pipe	1

KEY	PART #	DESCRIPTION	QTY.
39	140FA039	Fuel Tank	1
40	140FA040	Rubber Cushion	1
41	140FA041	Screw M5X12	2
42	140FA042	Fuel Tank Nog	1



MODEL Y4007
MINI CULTIVATOR AND DETHATCHER

PLEASE TAKE THE NEXT STEP TO REGISTER YOUR PURCHASE BY COMPLETING THE ENCLOSED WARRANTY CARD AND MAILING THE CARD TO THE FOLLOWING ADDRESS:

**PO BOX 145, 115 N. Prentice Street,
Clayton WI 54004**

OR

**BY GOING TO WWW.THUNDERBAYPRODUCTS.COM WEBSITE AND FINDING THE WARRANTY ICON.
CLICK ON THE WARRANTY ICON TO REGISTER YOUR PURCHASE.**



EC DECLARATION OF CONFORMITY

MANUFACTURERS BUSINESS NAME: SOURCE ONE INTERNATIONAL LIMITED

MANUFACTURERS ADDRESS: NO. 298 YONG DING XI ROAD
ECONOMIC DEVELOPMENT ZONE
TAIZHOU, JIANGSU PROVINCE
225300, P.R. CHINA

US ADDRESS: AS ABOVE

WE DECLARE THE FOLLOWING ABOUT THIS PRODUCT:

PRODUCT NAME: MOTOR HOE

COMMERCIAL NAME: SAME

FUNCTION: SOIL TILLING

MODEL NUMBER: Y4007

TYPE: GAS POWERED

FULLFILLS ALL THE RELEVANT PROVISIONS OF DIRECTIVES 2006/42/EC

PLACE AND DATE OF DECLARATION: TAIZHOU, P. R. CHINA